

# MV42 Vibration Sensor

## Overview

The MV42 is a compact and robust vibration sensor used to monitor and detect misalignment or imbalance in motors, fans, centrifuges, compressors, generators and other machinery. Widely used in industrial applications, the MV42 is a key part of any plants preventive maintenance plan.

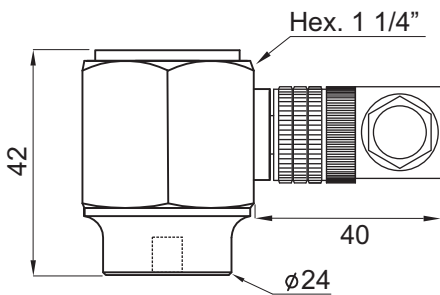
The sensor measures the mechanical vibration speed in a range of 10, 25 and 50 mm/s rms on non-rotating surface and converts it to signal 4...20mA (2-wire) proportional with great precision and stability even when applied to large equipment .

The MV42 can be installed with a threaded fixed base or magnetic base (recommended when you need to remove or easily move the sensor).

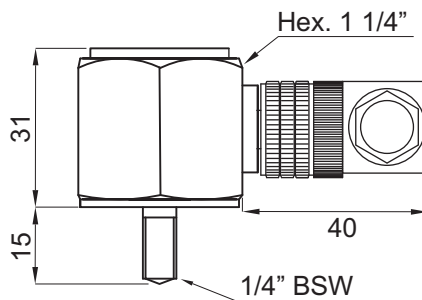


## Dimensions (mm)

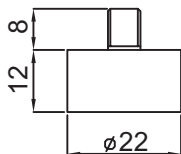
**MV42**  
Magnet or screw and nut optional



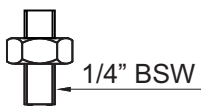
**MV42**



**Magnet**



**Screw and Nut**



## Technical Characteristics

---

**Application:** Identify misalignment and imbalance in industrial equipment

**Power Supply:** 10...30 Vdc

**Consumption:** max. 22mA

**Output:** 4...20 mA (2 wires)

**Isolation:** 500Vrms between circuit and housing

**Accuracy / Stability / Linearity:**  $\pm 0.5\%$  FS

**Range:** 10, 25 and 50 mm / s RMS

**Electrical Connection:** M12 connector

**Body Material:** Stainless Steel 316

**Protections:** Polarity Reversal / Interference  
Electromagnetic / Electrical Surges

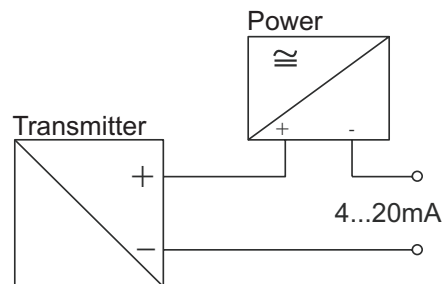
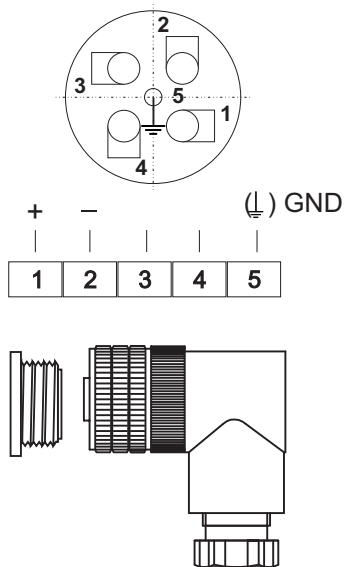
**Operating Temperature:** -10 to 70 °C

**Protection:** IP67 (IEC 60529)

## Electrical Connection

---

M12 Connector



## Código de Pedido

MODEL	
MV42	Vibrating Sensor (4...20mA)
DIMENSION	
1	1/4"
2	3/8"
3	1/2"
X	Outros
PROCESS CONNECTION	
B	BSP
N	NPT
W	SCREW AND NUT 1/4" (whit worth)
HOUSING	
SC	NONE
RANGE	
R	Especify (RMS)
R10	0...10 RMS
R20	0...20 RMS
R25	0...25 RMS
R50	0...50 RMS
ELECTRICAL CONNECTION	
M	M12 connector
S	Poliethene cabo with 2 meters clipped
ACESSORIES	
0	NONE
M	Magnetic

rev\_09\_2015

Sitron - Brasil  
R. Baronesa de Itu, 83  
São Paulo - SP - 01231-001  
T.: (5511) 3825-2111  
F.: (5511) 3825-2171

Sitron - USA  
1800 Prime Place  
Hauppauge, NY 11788  
PH: 516-935-8001

www.sitron.com  
BRASIL: vendas@sitron.com  
USA / Other Countries: info@sitron.com